

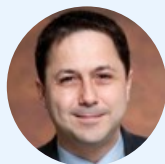
Virtual Health Summit - Midwest & TOLA

Virtual Health Summit

SPEAKERS



Thomas McGinn MD MPH
Executive Vice President, Physician Enterprise
[CommonSpirit Health](#)



Anthony Perry
Vice President Ambulatory Transformation
[Rush University Medical Center](#)



Iris Berman
Vice President of Telehealth Services
[Northwell Health](#)



Adam Darvish
Senior Vice President Health System Development
[Kindred](#)



Roberta Schwartz
Chief Innovation Officer
[Houston Methodist Healthcare System](#)



Cara Veale
CEO
[Indiana Rural Health Association](#)



Kevin Ban
Chief Medical Officer
[Walgreens](#)



VJ Viswanathan
CEO
[Torq](#)



Adrin Mammen
Associate Vice President Patient Access Transformation
[Montefiore Health System](#)



Sarah Pletcher
Vice President and Executive Medical Director Virtual Care
[Houston Methodist Healthcare System](#)



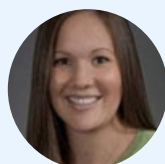
Melissa Jordan
Director Quality & Telehealth, Post-Acute Division
[Advocate Aurora Health System](#)



Brian Skow MD
Chief Medical Officer
[Avera Health](#)



Chad Craig
RVP Medical Affairs & System Hospital Medicine Director
[Marshfield Clinic Health System](#)



Jody Haines MHA FACHE
Director Telehealth
[Billings Clinic](#)



Albert Ferreira
Director Telehealth Operations
[Metro Health](#)



Chuck D'Antonio
Manager, Solution Architecture
[OutSystems](#)



Judd Hollander
Senior Vice President of Healthcare Delivery Innovation
[Thomas Jefferson University](#)

Healthcare leadership needs to exhibit adaptability and resilience, especially during times of disruption. Being forced to make extremely fast decisions with high levels of uncertainty requires the latest knowledge within the industry's latest technologies.

The C-Vision program team carefully researches the issues facing healthcare leadership with our panels of industry advisors and brings to you impactful programs that provide real world strategies and solutions that can have meaningful impact in the short and long term.

[Click Here to Register](#)

July 15, 2021

Central Standard Time (CST)

KEYNOTE

9:00 AM-9:30 AM

Impacts of Virtual Health on Patient Centric Care

Telemedicine is rapidly evolving. Issues with regulation and reimbursement have prevented its full immersion into the healthcare system. During the current pandemic, the Centers for Medicare and Medicaid Services expanded access to telemedicine services. The advantages of telemedicine suggest its cost-effectiveness, ability to extend access to specialty services, and its potential to help mitigate the looming physician shortage. Disadvantages seemingly include lack of available technological resources in certain parts of the country, issues with security of patient data, and challenges in performing the traditional patient examination. Let's explore.

PANELISTS



Thomas McGinn MD MPH
Executive Vice
President, Physician
Enterprise
CommonSpirit
Health

VISION KEYNOTE PANEL

9:35 AM-10:30 AM

Shaping a Virtual Health Strategy

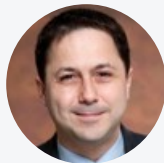
Virtual Health offers an opportunity for healthcare providers to improve the value for their patients, communities, and regions. As providers continue to innovate how care is provided they are seeing the measurable impact virtual health can make by leveraging technology to connect with patients in new ways. Let's consider key drivers, scope of services, and methods of delivery.

CHAIR



Iris Berman
Vice President of
Telehealth Services
Northwell Health

PANELISTS



Anthony Perry
Vice President
Ambulatory
Transformation
Rush University
Medical Center



Adam Darvish
Senior Vice President
Health System
Development
Kindred



Roberta Schwartz
Chief Innovation
Officer
Houston Methodist
Healthcare System



Cara Veale
CEO
Indiana Rural Health
Association



Brian Skow MD
Chief Medical Officer
Avera Health

FIRESIDE CHAT

10:35 AM-11:30 AM

Patient Centric Care and the Future of Pharmacy

Healthcare is creating more opportunities for patients to receive remote treatment options whether from their home or from long-term

care or senior living residence. An increasingly important component of treatment planning is prescription services. How do the internal or external services provided by the pharmacy mirror the patient-centric care models the healthcare provider has developed? A patient's experience with the pharmacy of the future will be a true omnichannel experience. In fact, their experience won't start with walking in the door, it may start on their couch when they use a mobile device to contact their pharmacy.

PANELISTS



Kevin Ban
Chief Medical Officer
Walgreens



VJ Viswanathan
CEO
Torq

VISION VOICES

11:35 AM-12:05 PM

Improving Quality of Care and Creating Financial Efficiencies

With new technologies boosted by electronic medical records and patient data management systems, data science, and analytic tools, massive amounts of data can be screened in seconds. Thus providing insightful information. How can we more effectively use the information in virtual health to make decisions and manage resources including the optimization of workflow, reducing unnecessary variation, and more effectively, managing workflow?

PANELISTS



Chuck D'Antonio
Manager, Solution
Architecture
OutSystems

KEYNOTE

12:10 PM-12:40 PM

Virtual Health 2021 Debunking The Myths

Prior to the Covid-19 pandemic, policymakers and leaders from both the health care delivery side and also the payer side were busy "reimagining" health care; but change was slow to occur because the economic incentives were not aligned with the vision. Covid-19 changed everything. Suddenly it's time to maneuver past reimagining and begin recreating. Let's consider the perceived impediments that led to the slow adoption of telemedicine, the changes that came with the Covid-19 pandemic, and advice on how to most easily implement a telemedicine program rapidly.

PANELISTS



Judd Hollander
Senior Vice President
of Healthcare
Delivery Innovation
Thomas Jefferson
University

VISION KEYNOTE PANEL

12:45 PM-1:40 PM

What are the Keys to Effective Use of People, Processes & Technologies?

Innovation is the result of successful people, processes, and technology changes that enable a new level of productivity and performance. What are the disruptors that have impacted virtual health, and how healthcare organizations across the continuum achieve the right combination of people, processes, and technology?

CHAIR

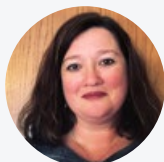


Adrin Mammen
Associate Vice
President Patient
Access
Transformation
Montefiore Health
System

PANELISTS



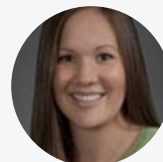
Sarah Pletcher
Vice President and
Executive Medical
Director Virtual Care
Houston Methodist
Healthcare System



Melissa Jordan
Director Quality &
Telehealth, Post-
Acute Division
Advocate Aurora
Health System



Chad Craig
RVP Medical Affairs
& System Hospital
Medicine Director
Marshfield Clinic
Health System



**Jody Haines MHA
FACHE**
Director Telehealth
Billings Clinic



Albert Ferreira
Director Telehealth
Operations
Metro Health

TOGETHER WITH

